

## Prefixes

# **mis** means: **wrong**

spell = **misspell**

treat = **mistreat**

read = **misread**

Can you think of any more?



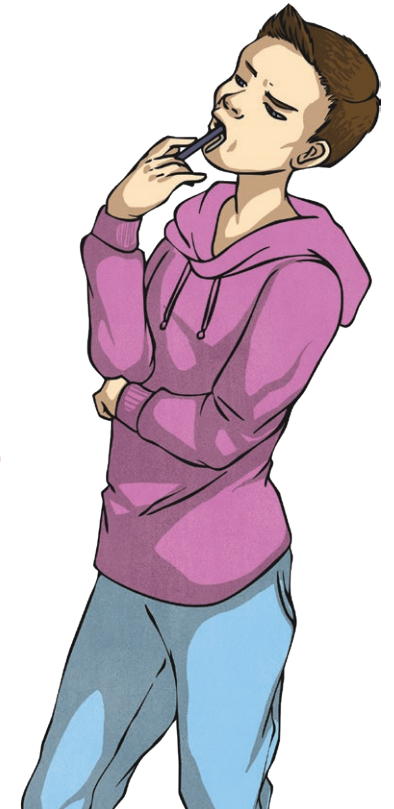
## Prefixes

# anti means: against

clockwise = anticlockwise

bacterial = antibacterial

Can you think of any more?



## Prefixes

**non** means: **the opposite of**

stop = **non**stop

sense = **non**sense

fiction = **non**fiction

**Can you think of any more?**



## Prefixes

**co** means: **together/joint**

operate = **co**operate

worker = **co**worker

pilot = **co**pilot

Can you think of any more?



## Prefixes

**ex** means: **out/outside of**

**ex**hale

**ex**pend

**ex**plode

**ex**plore

**ex**clude

Can you think of any more?



## Prefixes

**un** means: **not**

able = **un**able

fair = **un**fair

reliable = **un**reliable

Can you think of any more?



## Prefixes

**dis means: not/the opposite of**

belief = **disbelief**

like = **dislike**

similar = **dissimilar**

**Can you think of any more?**



## Prefixes

**de means: not/the opposite of**

frost = **defrost**

bug = **debug**

part = **depart**

**Can you think of any more?**

